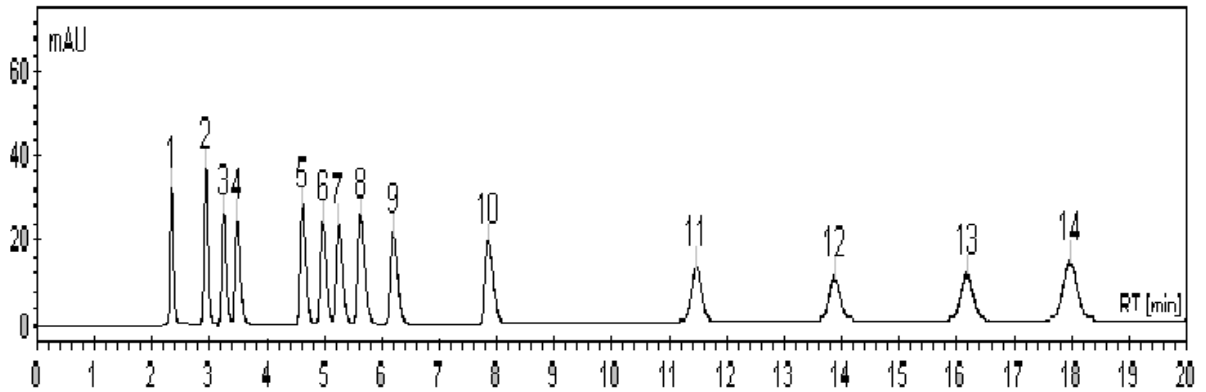


Zodiac C8 液相色谱柱分离三氯乙酸和苯甲酸混合物的应用

Columns: Zodiac C8 Column
Dimensions: 150 x 4.6 mm, 5 μ m
Mobile Phase: A: H₂O + 0.1% HCOOH, B: CH₃CN + 0.1% HCOOH
Gradient: 30% - 40% B in 15 mins, hold at 40% B for 15 min
Flow Rate: 1.0 ml/min
Temperature: Ambient
Detection: 254 nm



Sample: 1. 7-Aminoclonazepam
2. 7-Aminoflunitrazepam
3. Nordoxepin
4. Doxepin
5. Desipramine
6. Imipramine
7. Nortriptyline
8. Amitriptyline
9. Trimipramine
10. Clomipramine
11. Nordiazepam
12. Clonazepam
13. Flunitrazepam
14. Diazepam

化合物名称：诺多西平、多塞平、地昔帕明、丙咪嗪、去甲替林、阿米替林、三甲咪嗪、氯丙咪嗪、氯硝西洋、地西洋、7-氨基氯硝西帕姆、7-氨基氟硝西帕米、诺地西洋、氟硝西帕